

# XREAL Beam Pro

## User Guide



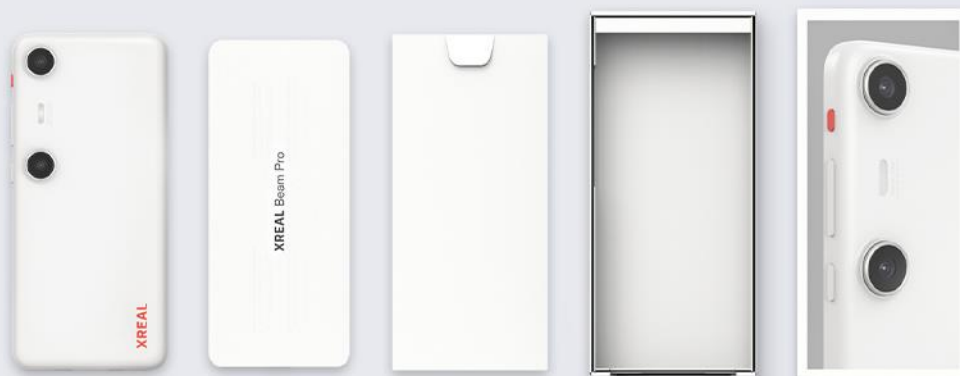
# Contents

• Unboxing & Buttons	02
• Basic Usage	03
• Using Video Tutorial	07
• Device Streaming Methods	08



# Unboxing & Buttons

## Package Contents



User Manual x1

Beam Pro x1

Warranty Card x1

## Key Hardware Overview

Front Camera

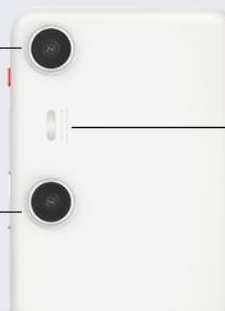


Mode Button

Volume button

Wake / Lock Button

Spatial Camera



Flashlight

Spatial Camera



Micro SD Card Slot

USB-C Charging Port

USB-C Glasses Port



Note: Supports up to 27W charging or 5V/1.5A external power output.

# Basic Usage of Beam Pro

## Connection Method

Beam Pro can be directly connected to XREAL AR glasses without additional devices, providing a more convenient and comfortable experience.



## How to Record 3D/ Spatial Videos

When capturing spatial videos or photos, keep the subject at a distance of 1 to 2.5 meters from Beam Pro for the best 3D effect.



*\*Hold Beam Pro horizontally when recording spatial videos or photos.*

## How to Watch 3D/ Spatial Videos

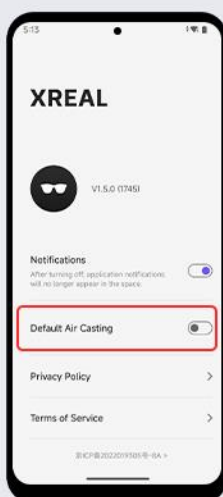
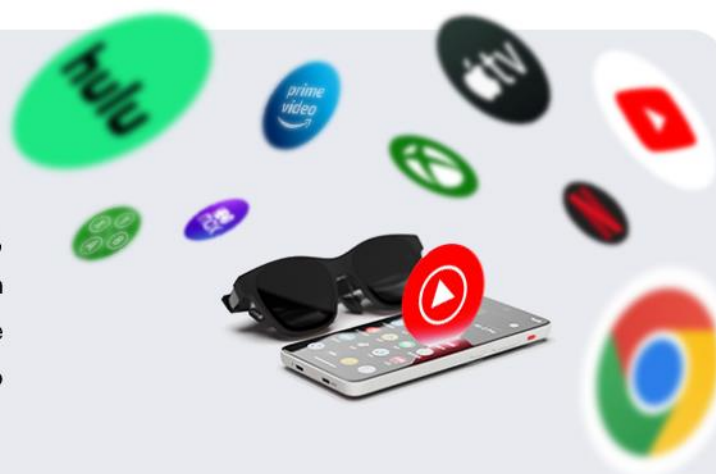
After successfully connecting Beam Pro to XREAL AR glasses, enter Nebula OS and open [Gallery] to view your recorded content.



# Basic Usage of Beam Pro

## How to Download Apps

Once Beam Pro is connected to Wi-Fi, you can search and download apps from [Play Store] or [App Market], or visit the app's official website via a browser to download and install directly.



## How to Switch Between Nebula OS and Air casting

You can switch modes using Default Air Casting

## How to Transfer Files



### Bluetooth Transfer

After successfully pairing Beam Pro with a device via Bluetooth, you can transfer files wirelessly.



### Third-Party App Transfer

Use the file transfer function in third-party softwares, like Whatsapp.



### Wired Transfer

Transfer files using USB-C to USB-C or USB-A to USB-C cables.



# Basic Usage of Beam Pro

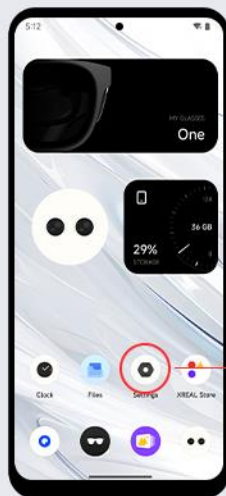
## How to Insert / Remove the SD Card

Beam Pro supports MicroSD cards up to 1TB.

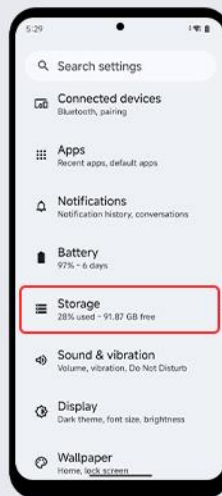
- ① Use the ejector pin to press into the small hole and release the card tray.
- ② Insert or remove the SD card following the tray diagram.
- ③ Push the tray back in securely.



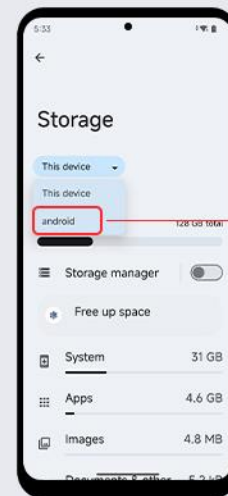
## Formatting the SD Card



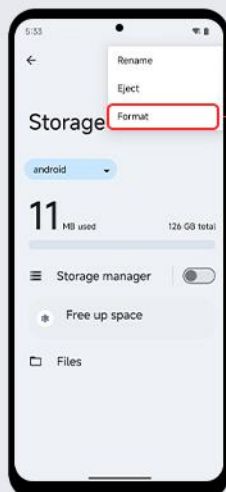
Go to Settings



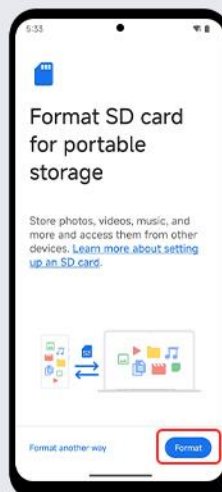
Select Storage



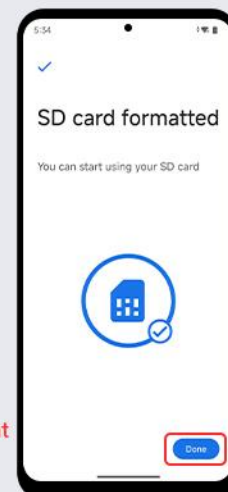
Tap SD Card



format

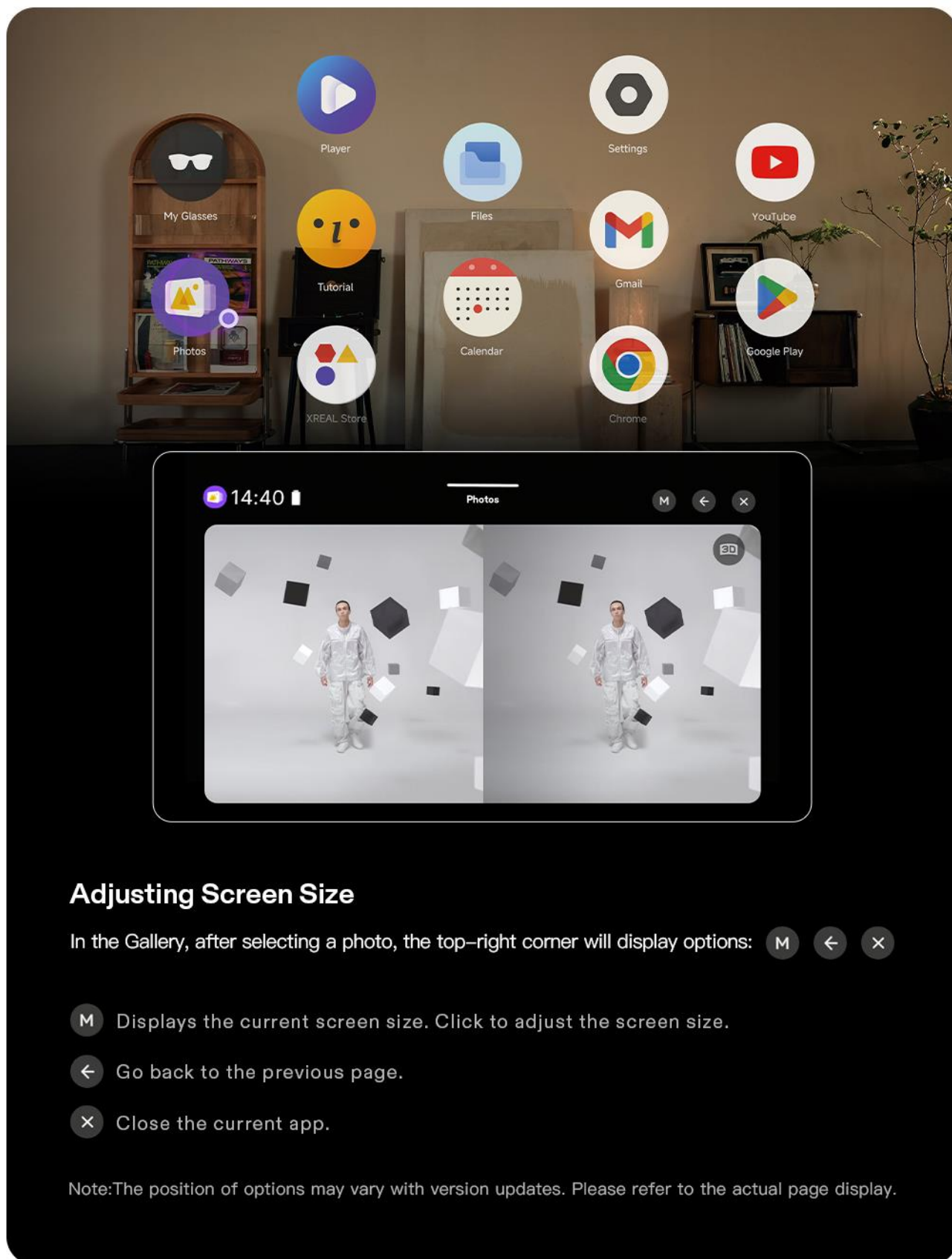


Choose Format SD Card



Confirm to complete the process.

# Basic Usage of Beam Pro



# Using Video Tutorial

## **Beam Pro Product Operating Overview**

URL: <https://reurl.cc/QYpzm0>

## **Beam Pro “My Glasses” Operating Guide Introduction**

URL: <https://reurl.cc/o8DWq3>

## **Beam Pro “My Glasses” Operating Guide Introduction**

URL: <https://reurl.cc/M37qLX>





# Device streaming tutorial

## PC streaming tutorial

URL: <https://reurl.cc/mxdEjW>

## Xbox streaming tutorial

URL: <https://reurl.cc/paDONa>

## PlayStation streaming tutorial

URL: <https://reurl.cc/eM51lj>

