



# **OWNERS MANUAL**

## **CH220**

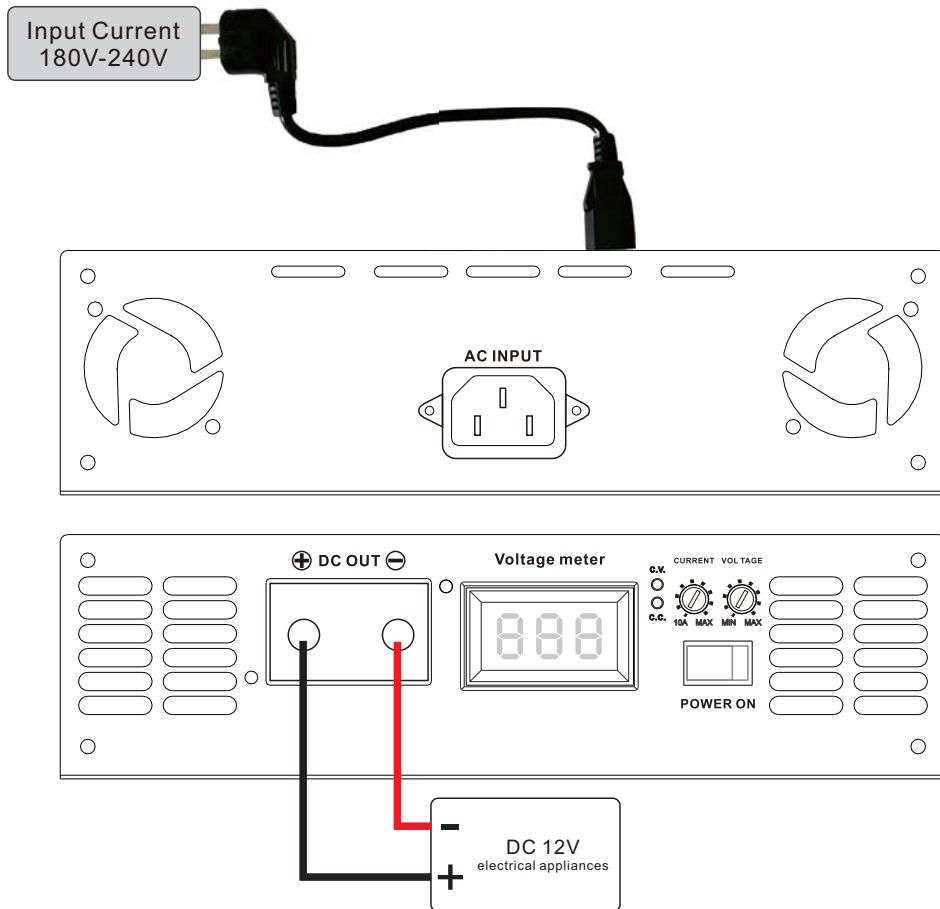
- We greatly appreciate your purchase of the unit.
- Be sure to take maximum advantage of all the unit has to offer, read these instructions carefully and set properly. Be sure to keep this manual for future reference, should any questions or problems arise.

## **POWER CONNECTION LEADS**

### ***Notes on the Power supply***

- \* Connect the 12V power supply lead only after all the other leads have been connected.
- \* Be sure to connect the ground lead of unit securely to a metal point of the car. A loose connection may cause a malfunction of the amplifier.
- \* Be sure to connect the remote control lead of the heat unit to the amplifier's remote terminal. A loose connection may cause a malfunction of the amplifier.
- \* When using a car radio without a remote output for the amplifier, connect the remote terminal to the accessory power supply.
- \* Use the power supply lead with a fuse attach attached
- \* Place the fuse in the power supply lead as close as possible to the car battery.
- \* You must use 100% oxygen free copper wire at its maximum size. Copper clad aluminum wire, CCA, will cause failure.

**Fig 1 POWER CONNECTOR**



## **CH220**

|                            |                 |
|----------------------------|-----------------|
| Input Voltage (AC)         | 180V-240V       |
| Input Frequency            | 50Hz-60Hz       |
| Input Current              | 20A             |
| Output Voltage (DC)        | 10V-17V         |
| Output Power               | 3000W           |
| Static power consumption   | 6W              |
| Dimensions (EXCL. Packing) | 26cm*25cm*7.2cm |