

9



9 This is the final result.

Facia plate installation kit for:

# OPEL

Model: Corsa;

Year: 2015>

Kit content: double DIN facia plate  
mounting brackets + screws

Compatibility: Compatible with double DIN devices

Customer code: CA-HM-GM.005



## INSTALLATION MANUAL



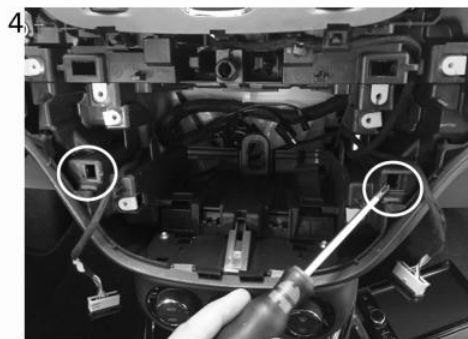
1 This is how the original dashboard looks like. Remove the cover as shown in the picture.



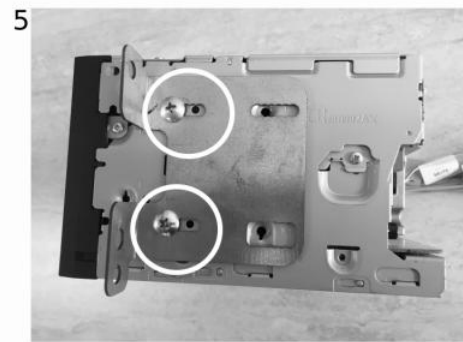
2 Remove the facia plate by unscrewing the circled screws as shown and save the buttons.



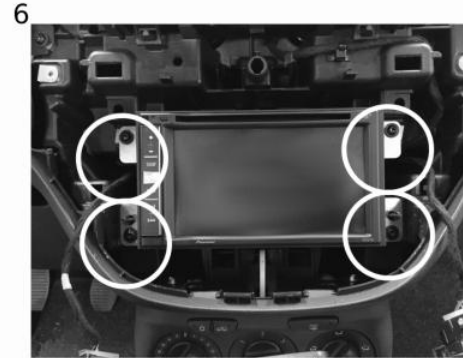
3 Remove the head unit by unscrewing the circled screws as shown and save them.



4 Remove the metal clips as shown in the picture.



5 Take the supplied brackets and fix them to the head unit as shown in a picture.



6 Connect all cables, verify the proper functioning of the system, put the new radio unit into the dashboard and fix it by screws.



7 Insert the buttons previously saved in the supplied facia plate.



8 Insert the supplied facia plate and the cover previously saved.