



ELECTRONIC MELODY

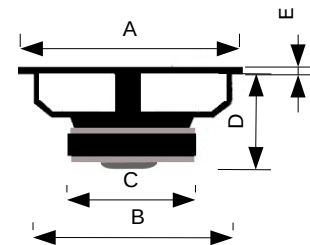


MCW65SPL

Mid Woofer 6,5" - 4Ω
Membrana in cellulosa smorzata
Sospensione in gomma



Dimensioni



A	165	mm
B	142	mm
C	120	mm
D	74	mm
E	4	mm

Potenza Max	200	W	Qms	7,62	
Potenza RMS	90	W	Qes	0,47	
Ø Foro Pannello	142	mm	Qts	0,21	
Sensibilità (1W/1m)	91	dB	Mms	17,10	g
Impedenza Nominale	4	Ω	Cms	0,67	mm/N
Ø Bobina Mobile	38	mm	Vas	16,49	l
D	130,00	mm	Bxl	6,04	Wb/m
Re	3,40	Ω	L1K	0,70	mH
Fs	47,00	Hz	L10K	0,11	mH

MCW65SPL

