



ELECTRONIC MELODY



MCZ35

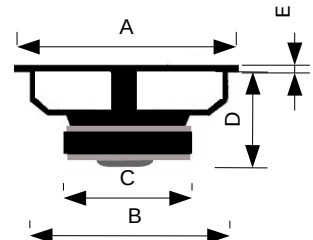


Coassiale 3,5" - 4Ω

Membrana woofer in cellulosa smorzata

Tweeter in neodimio

Dimensioni



A	87	mm
B	77	mm
C	60	mm
D	36	mm
E	4	mm

Potenza Max	80	W	Qms	6,37	
Potenza RMS	30	W	Qes	2,72	
Ø Foro Pannello	77	mm	Qts	1,91	
Sensibilità (1W/1m)	86	dB	Mms	2,93	g
Impedenza Nominale	4	Ω	Cms	0,28	mm/N
Ø Bobina Mobile	25	mm	Vas	0,44	l
D	65,00	mm	Bxl	2,03	Wb/m
Re	3,50	Ω	L1K	0,41	mH
Fs	174,56	Hz	L10K	0,06	mH

MCZ35

