



ELECTRONIC MELODY

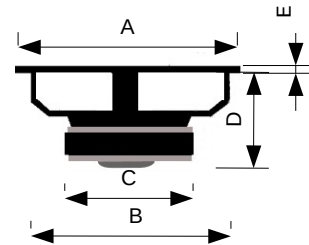


MCW65Z



Woofer 6,5" - 4Ω
Membrana in cellulosa smorzata
Sospensione in gomma

Dimensioni



A	165	mm
B	142	mm
C	80	mm
D	60	mm
E	4	mm

Potenza Max	120	W	Qms	2,95	
Potenza RMS	50	W	Qes	1,10	
Ø Foro Pannello	142	mm	Qts	0,80	
Sensibilità (1W/1m)	89	dB	Mms	11,69	g
Impedenza Nominale	4	Ω	Cms	0,46	mm/N
Ø Bobina Mobile	25	mm	Vas	11,22	l
D	130	mm	Bxl	3,96	Wb/m
Re	3,40	Ω	L1K	0,62	mH
Fs	68,94	Hz	L10K	0,19	mH

MCW65Z

