



ELECTRONIC MELODY



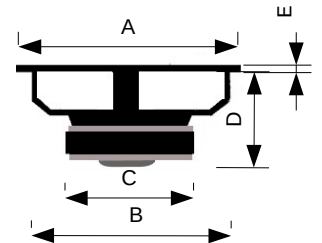
MCW65N

Woofer 6,5" - 4Ω

Membrana in cellulosa smorzata
Sospensione in gomma



Dimensioni



A	165	mm
B	142	mm
C	101	mm
D	71	mm
E	7	mm

Potenza Max	180	W	Qms	3,15	
Potenza RMS	80	W	Qes	0,48	
Ø Foro Pannello	142	mm	Qts	0,42	
Sensibilità (1W/1m)	90	dB	Mms	15,06	g
Impedenza Nominale	4	Ω	Cms	0,68	mm/N
Ø Bobina Mobile	32	mm	Vas	16,76	l
D	130,00	mm	Bxl	5,86	Wb/m
Re	3,50	Ω	L1K	0,65	mH
Fs	49,68	Hz	L10K	0,24	mH

MCW65N

