



ELECTRONIC MELODY

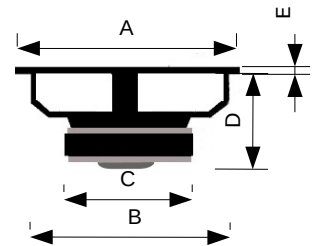


# MCD65



Doppio Cono 6,5" - 4Ω  
Membrana in cellulosa smorzata  
Sospensione in gomma

## Dimensioni



<b>A</b>	165	mm
<b>B</b>	142	mm
<b>C</b>	85	mm
<b>D</b>	63	mm
<b>E</b>	5	mm

<b>Potenza Max</b>	150	W	<b>Qms</b>	3,46	
<b>Potenza RMS</b>	60	W	<b>Qes</b>	0,93	
<b>Ø Foro Pannello</b>	142	mm	<b>Qts</b>	0,73	
<b>Sensibilità (1W/1m)</b>	90	dB	<b>Mms</b>	12,51	g
<b>Impedenza Nominale</b>	4	Ω	<b>Cms</b>	0,47	mm/N
<b>Ø Bobina Mobile</b>	25	mm	<b>Vas</b>	11,55	l
<b>D</b>	130	mm	<b>Bxl</b>	4,36	Wb/m
<b>Re</b>	3,40	Ω	<b>L1K</b>	0,56	mH
<b>Fs</b>	65,67	Hz	<b>L10K</b>	0,19	mH

## MCD65

