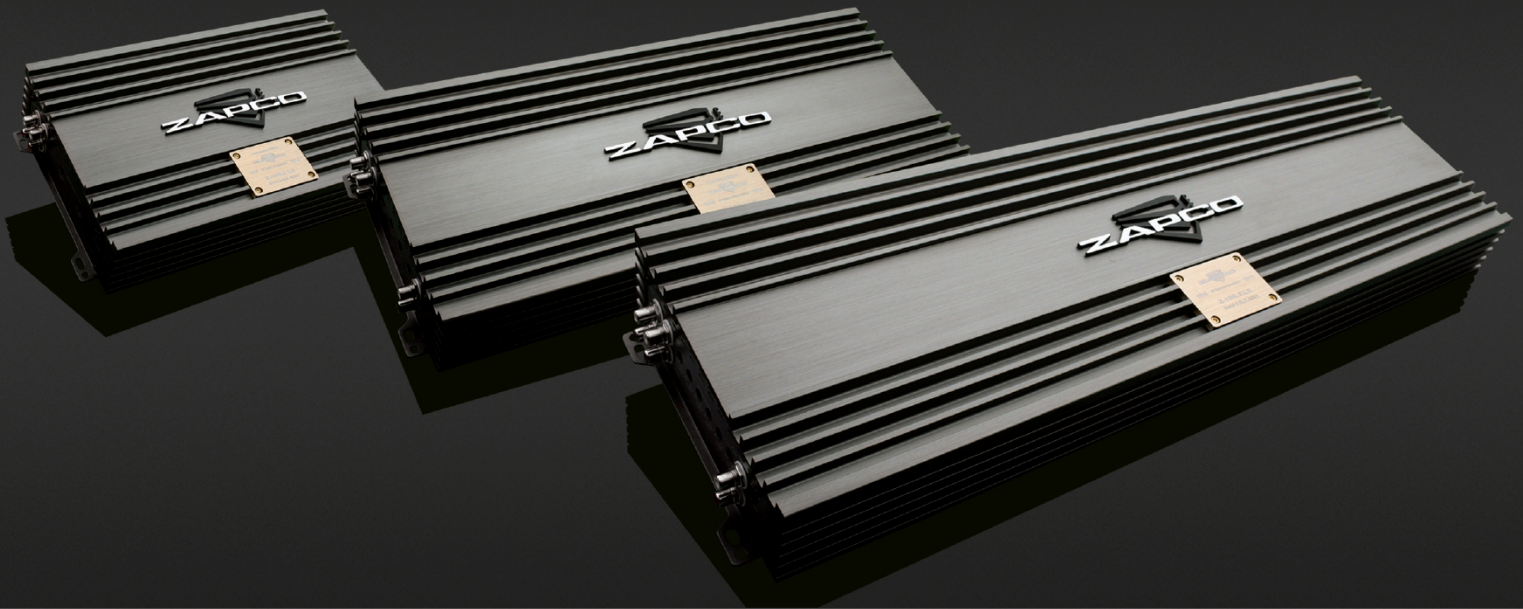




# Z-LX Series Class AB Selected Components Amplifiers



## The Zapco Z-Series LX Amplifiers

In 2012 Zapco introduced the new Z-Series of competition amplifiers. The Z-series was hailed as the best sounding Zapco amps ever. They were even compared to the McIntosh and Bryston home amps, for clarity, sound stage, and an ability to maintain their sound quality at the highest listening levels.

The question then for Zapco was "Where do we go from here?". How do we take our best ever sound quality to a whole new level. The answer was to take the great Z-Series amps down to the bare bones and think of the project not as a production amplifier, but rather as a custom designed, one of a kind piece. What would we do if we were building a custom amp for ourselves. What could we do to the power supply to improve the sound? What parts would we use for the very best sound quality. What if sound quality was the only criteria? Not features, not size, not even price! Just Sound!

**The result is the new Z-Series LX amplifier.** Two models saw the light early as the 2104 Anniversary Limited Edition (LE) amps. Now for 2015 we have the Z-150.2 LX, Z-150.4 LX, Z-150.6 LX, and soon the Z-400.2 LX.

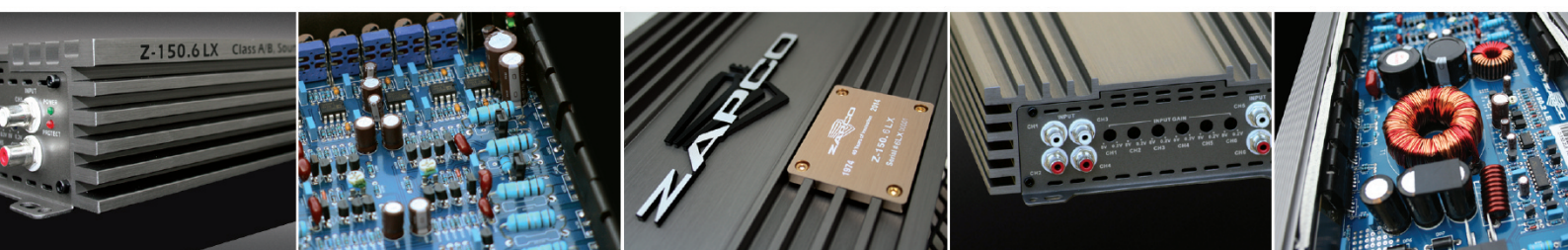
The LX is an amp like no other! Only the best internal parts are used. Open most amplifiers... even "high-end" amplifiers, and you will find standard grade capacitors and ICs.

Open an LX amp and you'll find Elna Silmic II RFS caps and Nichicon KZ caps, designed specifically for high end home audio use. The Op-amps in the LX amplifiers are all Analog Devices OP275. You'll also find matched pairs of Sanken output devices.

Where else will you find these parts and a car amp? You won't!

We tightly regulated the power supply, and the pre-amp section, and we put ceramic and mica bypass caps everywhere on these amps, so you'll never have to worry about voltage fluctuations muddying up the sound of a Zapco Z-Series LX amp. We doubled the efficiency of the power supply and added an extra filtering stage to reduce noise and distortion.

We used only the best hardware on the LX amps, and we eliminated the crossovers, bass boosts and other bells and whistles that hampered the sonic purity of the amps. **It's all about the sound!**





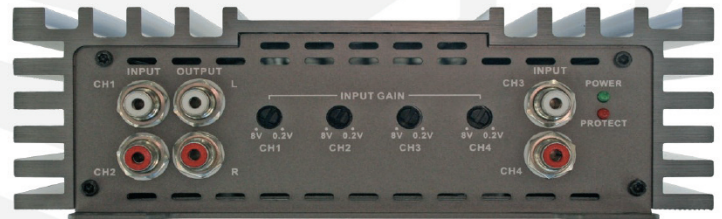
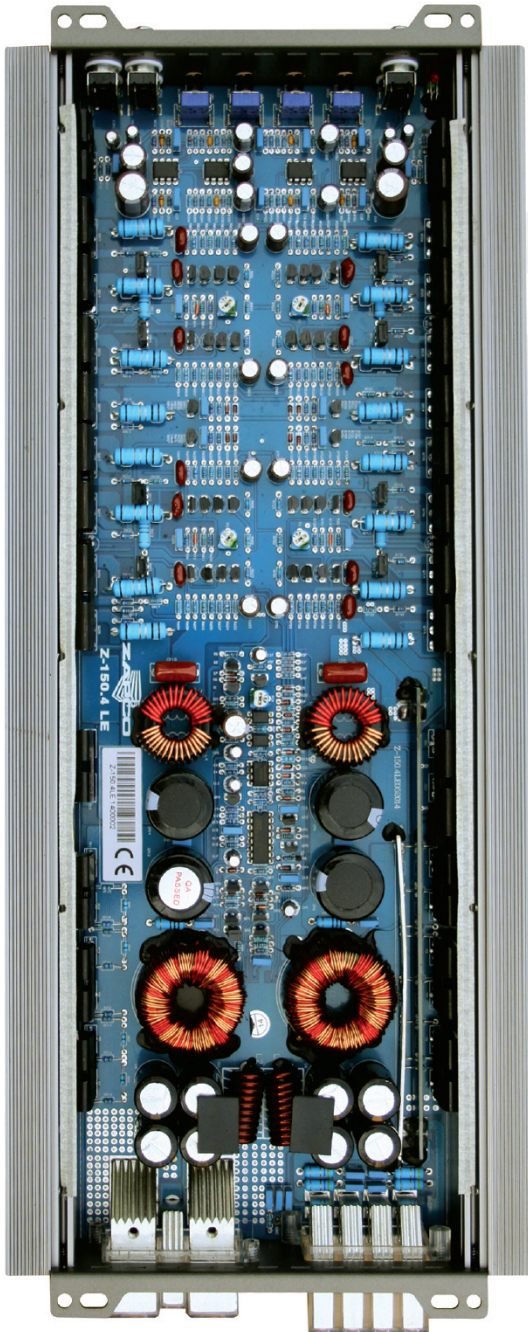


# Z-LX Series Class AB Selected Components Amplifiers

## What makes the new Z-Series LX amps sound better than all the rest? Almost Everything!

We spared no expense with these amplifiers. We fully intended them to be the best available. They are built for the true audiophile.

- Output devices in the LX's are all from Sanken of Japan, only the best.
- For small value signal caps, Mica is the best available.
- All the electrolytic caps in the signal path are Elna Silmic II for the best in sound quality.
- The LX amps get the Analog Devices OP275 Op-amps for unsurpassed musicality. Try to find these in any other car amplifiers.
- High Voltage Nichicon KZ storage caps provide rock solid, voltage and amazing clarity to the amplifier
- High current switching FETs allow the power supply to operate at twice the usual speed and greatly increase the Efficiency of the power supply.
- Input filter coil and ultra low ESR, high voltage Panasonic FC input filter caps keep the voltage into the power supply clean and quiet.
- Advanced regulation circuitry keeps power up and keeps voltage fluctuations out, regardless of input voltage swings.



Tiffany style Bolt through RCA connectors give positive grip and can not be damaged by more aggressive high end RCA's. Separate right and left channel gain controls allow perfect signal balancing. All other preamp controls are eliminated. All for signal purity!

## The Zapco Z-Series LX Amplifiers. It's all about the Sound

