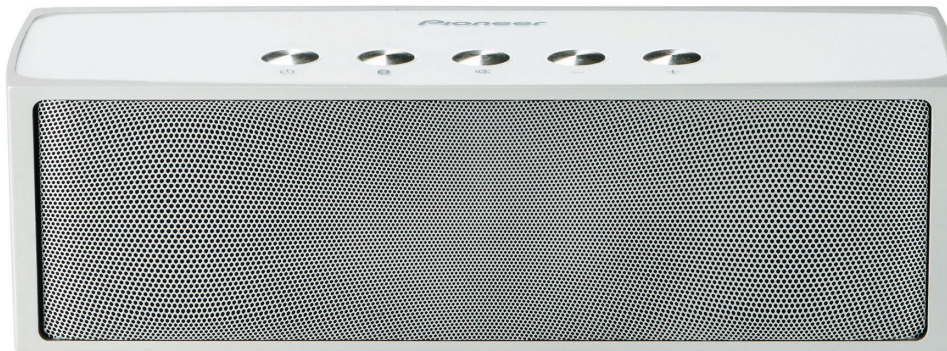




XW-BTSP70-K



XW-BTSP70-S

Designed with a rigid and sleek aluminium body, the XW-BTSP70-K/-S portable speaker system is a great companion for your smartphones and tablets for streaming audio via *Bluetooth* Wireless Technology. With support for aptX® *Bluetooth* codec, you can enjoy high-quality sound with lesser delay compared to the standard SBC codec, with the audio in sync with your smartphone videos. The new Smart Audio Technology consists of the Smart Amp, Double-Molding Diaphragm, Dual Passive Radiators, and Compression Reflector, which combine to create clear and powerful sound from a compact speaker.

#### AUDIO FEATURES

- › Smart Audio Technology Featuring Smart Amp, Double-Molding Diaphragm, Dual Passive Radiators, and Compression Reflector
- › Machined Aluminium Rigid Body
- › Wireless Audio Playback via *Bluetooth* ver. 2.1 + EDR (A2DP)
- › Supports aptX Codec for High-Quality *Bluetooth* Sound, and SBC Codec
- › SCMS-T Content Protection
- › Frequency Range: 20 Hz-20 kHz
- › 25 W (12.5 W + 12.5 W) Power Output
- › 4.0 cm Full-Range Speakers x 2
- › 8.0 x 4.0 cm Oval Passive Radiators x 2

#### CONVENIENCE

- › 3.5 mm Audio Input for Easy Connection with Audio Devices
- › Micro USB Port for Battery Recharge and AC Input
- › Approximately 8.5 Hours of Continuous Playback\* with Built-in Rechargeable Lithium-ion Battery
- › Smart Stand-by—The Power Automatically Turns on in response to the *Bluetooth*/Audio Inout Connected Device
- › True Wireless Stereo (TWS) Feature for Enjoying Stereo Playback Using Two Speakers

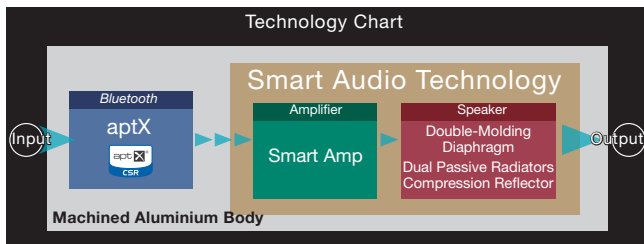
\* Battery performance may vary depending on output level

#### SPECIFICATIONS

- › Charging Time: 4 Hours
- › *Bluetooth* Range: Up to 10 m
- › Power Source: AC 100-240 V, 50/60 Hz, DC 5 V, 2.0 A (Micro USB Port)
- › Power Consumption: 9 W
- › Dimensions (W x H x D): 180 x 53.5 x 59 mm
- › Weight: 740 g
- › Included Accessories: AC Adapter and Cable for Charging

## Smart Audio Technology

The new Smart Audio Technology combines four features—Smart Amp, Double-Molding Diaphragm, Dual Passive Radiators, and Compression Reflector—for delivering clear, powerful sound from a compact speaker.



### Smart Amp

The Smart Amp dynamically controls the speakers by advance analysis of the speaker system's parameters. The musical energy is maximised with the overwhelming drive power.

### Double-Molding Diaphragm

The stroke has been maximised by integrating a rigid diaphragm with a flexible edge, realising the 8 cm-equivalent frequency range playback from a 4 cm unit, so that even the vocalist's breathing can be heard.



Double-Molding Diaphragm

### Dual Passive Radiators

By uniting two units, large amount of air can be instantaneously driven, creating dynamic and lively bass sound.



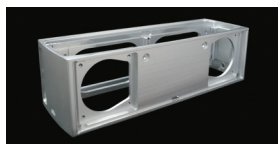
Dual Passive Radiators

### Compression Reflector

The mass of air produced by the Dual Passive Radiators is compressed against the compression reflector, then expands and is released at once from the side ducts. This allows massive and brisk deep bass emission regardless of the listening environment.

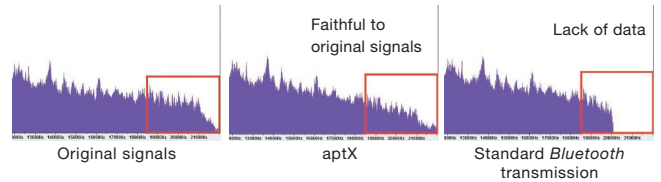
### Machined Aluminium Body

Rigid aluminium with high damping effect is used to eliminate unwanted vibration within the chassis during audio reproduction. The body is machined from a solid aluminium block for enhanced rigidity, delivering pure, clear sound.



## Support for aptX

The portable wireless speaker supports the aptX Bluetooth codec by CSR. With standard Bluetooth transmission, the data for the high-frequency sound gets cut out, while aptX can transmit the whole audible range of 20-20,000 Hz. The aptX has significantly less noise and distortion, realising clear sound reproduction. Additionally, the audio time lag is much smaller with aptX, so you can comfortably watch a video with the sound in sync.



## Bluetooth Wireless Technology

With the built-in Bluetooth, you can wirelessly play music and sound tracks for videos in surprisingly clear and powerful sound.



## Rechargeable Lithium-ion Battery

With approximately 4 hours of recharging, you can enjoy up to 8.5 hours of continuous playback on the speaker.

\* Playback time depends on content, volume etc.

## Smart Stand-by

The wireless speaker automatically turns on when you operate the Bluetooth device, or when audio signal comes through the audio input terminal.

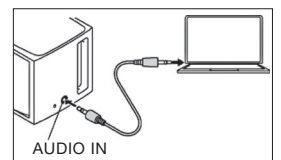
## True Wireless Stereo (TWS) Function

With two units, you can use one as the left speaker and the other as the right speaker. This function creates a full-scale speaker system for wirelessly playing the L/R channels in stereo.



## Audio Input Terminal

Connect external devices with a stereo mini-cable for wired audio playback. The audio input will automatically switch to AUDIO IN when you plug in the cable.



PIONEER and the Pioneer logo are registered trademarks of Pioneer Corporation.

The Bluetooth® word mark and logos are registered trademarks owned by Bluetooth SIG, Inc. and any use of such marks by ONKYO & PIONEER CORPORATION is under license. Other trademarks and trade names are those of their respective owners.

Certain Bluetooth features may not be supported by all compatible Bluetooth-enabled devices, and/or the functionality of such features may be limited in certain devices.

©2013 CSR plc and its group companies. The aptX® mark and the aptX logo are trade marks of CSR plc or one of its group companies and may be registered in one or more jurisdictions.