

9.2-Channel Class D Network AV Receiver

SC-LX59-K/-S



Enjoy precise audio reproduction, just as the creators intended with the AV receiver featuring Class D amplifier and SABRE³² Ultra DAC. Dolby Atmos[®] brings a new level of surround sound in the ideal environment made by Pioneer's MCACC Pro auto-room calibration with Full Band Phase Control, while the object-based DTS:X format will also be available with firmware update. Other highlights include video scaler with Super Resolution, Ultra HD Pass-through with HDCP 2.2, and aluminium front panel.

AMPLIFICATION

- > Channels: 9
- > Amplification Type: Class D (Direct Energy HD)
- > 760 W Multi ch Simultaneous Drive (8 ohms, 1 kHz, THD 1.0 %)
- > 240 W/ch (4 ohms, 1 kHz, THD 1.0 %, 1ch Driven)
- > 190 W/ch (6 ohms, 1 kHz, THD 1.0 %, 1ch Driven)

CONSTRUCTION DESIGN

- > Advanced Direct Construction
- > Rigid Trans-Stabilizer
- > Insulated Dual Chassis
- > Anti-Standing Wave Insulator

AUDIO FEATURES

- > Dolby Atmos[®]/Dolby[®] TrueHD/Dolby Digital Plus/Dolby Surround
- > DTS:X/DTS Neural:X Ready*1
- > DTS-HD Master Audio/DTS-ES/DTS Neo:X:111.1
- > DSD Direct Playback via Network/USB (2.8 MHz, 5.6 MHz/2ch)
- > DSD Disc (SACD) Playback via HDMI (2.8 MHz/5.1ch, 2ch)
- > SABRE³² Ultra DAC (ES9016+ES9016) for 9.2ch
- > Audio Scaler 192 kHz/32-bit Enhancer
- > MCACC Pro Room Calibration
 - Full Band Phase Control
 - Auto Phase Control Plus/Phase Control Plus
 - Standing Wave Control
 - 3D Time Axis Measurement
 - Subwoofer EQ (4 Band)
 - Bass Management System for Dolby Atmos Enabled Speakers
- > Sound Enhancements
 - PQLS Bit-stream/Multi-Surround/2ch
 - Advanced Sound Retriever (Multi-ch)
 - Auto Sound Retriever/Auto Sound Retriever for ARC
 - Auto Level Control (Multi-ch)
 - Virtual Speakers (Wide/Height/Surround Back)
 - Rendering Mode
- > Advanced Surround Modes
 - Action, Drama, Advanced Game, Sports, Classical, Rock/Pop
 - Front Stage Surround
 - Sound Retriever Air, Phones Surround
 - ECO Mode 1, ECO Mode 2

- > Input Volume Absorber
- > Speaker System 15 Patterns Including 7 Patterns for Dolby Atmos

Video Features

- > Ultra HD Pass-through with HDCP 2.2 (4K/60p/4:4:4/24-bit, 4K/24p/4:4:4/36-bit, 4K/60p/4:2:2/36-bit)
- > Video Scaler (1080p to 4K) with Super Resolution
- > Triple HD Noise Reduction
- > Advanced Video Adjust
- > Stream Smoother/Stream Smoother Link

HOME NETWORK FEATURES

- > Apple AirPlay Certified
- > DLNA Certified™ (1.5)
- > HTC Connect™ Certified
- > Windows[®] 8.1 Compatible
- > Music File Playback/Seek via Network/USB: AIFF, Apple Lossless, WAV, FLAC, MP3, WMA, AAC, DSD
 - 192 kHz/24-Bit Audio playback (AIFF, Apple Lossless, WAV, FLAC)
 - Multi-Channel (5.1ch, 5.0ch) Audio Playback (WAV*2, FLAC*3)
- > Gapless Playback for AIFF, Apple Lossless, WAV, FLAC, AAC, MP3, DSD
- > Spotify[®] Digital Music-Streaming Service Ready*4
- > Internet Radio with vTuner

CONVENIENCE FEATURES

- > iPod Digital Transmission via Front USB Terminal
- > Android™ Audio/Video Playback with MHL™
- > Start-up Navi (Initial Setting App) Ready (iOS/Android)*5
- > AVNavigator (Wiring Navi/Interactive Operation Guide)
- > iControlAV5 Remote Control App Ready (iOS/Android)*5
- > HDMI ZONE Out (HDZONE)
- > Built-in Wi-Fi[®] (Dual Band 5 GHz/2.4 GHz)
- > Built-in Bluetooth[®] Wireless Technology (Version: 2.1 + EDR, Profile: A2DP/AVRCP, Codec: SBC/AAC)
- > Power Save for HDMI Standby Through
- > Learning Remote Control (Luminous)

FRONT TERMINALS

- > HDMI 1 in
- > USB 1 in for iPod/iPhone, USB drive
- > MCACC Setup MIC in
- > Phones 1 out

REAR TERMINALS

- > HDMI 7 in (7 assignable, 1 for HDMI/MHL)
- > HDMI 3 out (2 for MAIN, 1 for MAIN/HDZONE)
- > Ethernet 1 In

- > AV (Composite) 2 In/1 Out
- > Audio 1 In (assignable)
- > Digital Coaxial 2 In (assignable)
- > Digital Optical 2 In (assignable)/1 Out
- > Component Video 1 In (assignable)
- > Monitor Composite 1 Out
- > Preout 11.2 ch (13.2 ch terminals)
- > Speaker 11 ch Out
- > Independent Dual Subwoofer
- > IR 2 In/1 Out
- > 12 V Trigger x 2/R5-232C

SPECIFICATIONS

- > Power Requirements: AC 220-230 V, 50/60 Hz
- > Power Consumption/Standby: 330 W/0.1 W
- > Dimensions (W x H x D): 435 x 185 x 441 mm
- > Weight: 15.3 kg

REAR PANEL



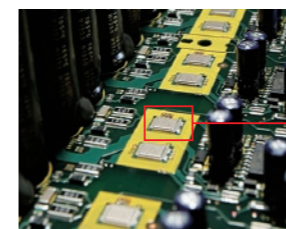
SC-LX59-K/SYXJ8



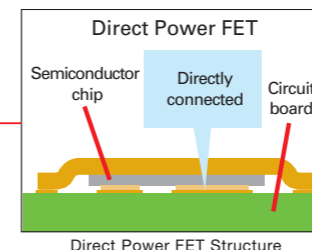
SC-LX59-S (Silver model)

Direct Energy HD Amplifier

For the ideal multi-channel environment, all channels should have the same speakers, driven by the same amplifier, under same conditions. So for the SC-LX59-K/-S, Pioneer has adopted the Direct Energy HD Amplifier capable of simultaneous high-power output for all channels. The core Direct Power FET has a simple structure with the semiconductor chip directly mounted on the circuit board. As a result, a large reduction in inductance components for improved signal quality, smaller heat sink by efficient heat dissipation, and shorter transmission path by cleaner circuitry have been achieved, realizing quality sound, high-power output, and high efficiency at the same time. As the Direct Energy HD Amplifier continues to improve by each generation, it creates the ideal reproduction environment for object audio as well as legacy formats.



Direct Power FET on Direct Energy HD Amplifier



Direct Power FET Structure

DTS:X Ready

DTS:X is the next-generation audio codec from DTS that leverages object-based audio to enable new immersive and interactive audio experiences. Since DTS:X can automatically adapt the audio to the existing channels and speaker system, no specific speaker layout is required. Experience an immersive soundscape with incredibly rich and life-like audio. With the ideal reproduction environment created by MCACC Pro, and the powerful and precise multichannel output by the Direct Energy HD Amplifier, the SC-LX59-K/-S maximises the advantages of the DTS:X format.



* DTS:X will be available with firmware update.

Dolby Atmos[®]

The SC-LX59-K/-S is compatible with the 7.2.4ch*, 9.2.2ch*, 7.2.2ch, 5.2.4ch configurations of Dolby Atmos[®]. You can reproduce object-oriented sound in smooth, curving movements, or the realistic three-dimensional movement overhead by the top speakers. However, the appropriate playback environment is required to bring out the best from Dolby Atmos. This is provided by MCACC Pro, which allows the phase for all frequencies of each speaker, allowing the most precise speaker drive for faithful reproduction of the true-to-life soundscape of Dolby Atmos. With synchronised sound and image, you can experience total immersion in the movie world.

* External amplifier required



Speaker Layout Example of a Dolby Atmos Home Cinema (7.2.4ch)

Full Band Phase Control

Pioneer's Phase Control technology effectively eliminates phase lag and significantly improves the multi-channel sound without any extra operation. Furthermore, The Full Band Phase Control technology focuses on the group delay in the speaker network filter, and adjusts the phase of each unit as well as the group delay for each speaker. Multi-range speakers gain the sound coherence of full-range speakers, while retaining the wide frequency range advantage. In an environment where the phase of all units and all channels are precisely controlled, a remarkably clear sound location with a surrounding feel is achieved. In combination with MCACC Pro's auto room tuning technology, the ideal multi-channel reproduction environment can be created, which faithfully replicates object audio and the intention of the directors.

ESS SABRE³² Ultra DAC

The highly acclaimed 192 kHz/32-bit ESS SABRE³² Ultra DAC (ES9016S) delivers exceptional sound with ultra-low distortion and high S/N ratio. It offers jitter-free performance for an astounding audio reproduction with rich deep bass.

Spotify[®] Digital Music-Streaming Service Ready

Enjoy on-demand access to millions of songs with Spotify's digital music-streaming service. With the wide range of music selection, you're sure to find a fitting song for your mood or occasion, right at your fingertips. You can make your own choice, or let Spotify surprise you. The SC-LX59-K/-S is ready for the Connect from Spotify, which lets you select songs on your Spotify app for listening on your audio system. * Spotify App, iPhone/iPod touch/iPad, and subscription required.



For service availability in your country check www.spotify.com.



Available with firmware update



*1 Firmware update required *2 Up to 192 kHz streams via USB, up to 96 kHz streams via wired LAN, up to 48 kHz via wireless LAN *3 Up to 96 kHz streams

*4 For service availability in your country, check www.spotify.com *5 Available for free download from the App Store/the Google Play™