

Installation Guide

CA-R-MER.00C

Steering wheel control Interface



Mercedes CAN-Bus 16 Way ISO and 40 Way Fakra

1 Remove original head unit.



2 Select the correct wiring loom for your vehicle connector type from the two looms supplied.

A



16 Way ISO

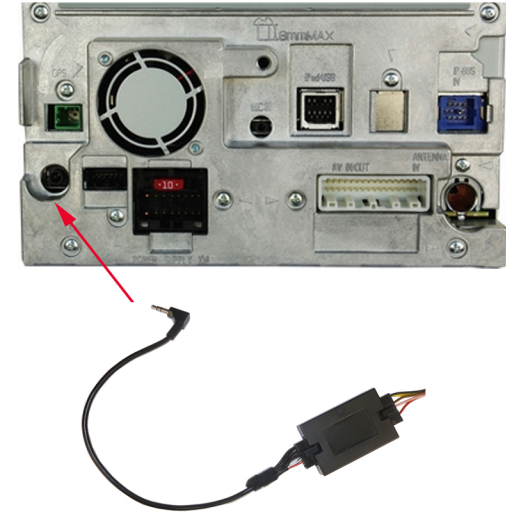
B



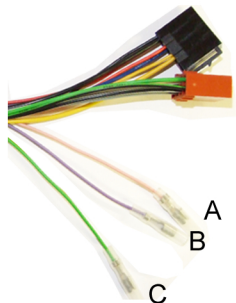
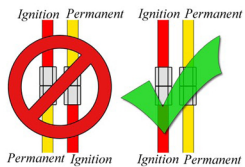
40 Way Fakra

3

Pioneer head unit



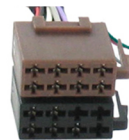
4



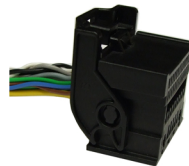
- | | |
|---------------------|--------------|
| A Pink Wire | - Speedpulse |
| B Purple/White Wire | - Reverse |
| C Green Wire | - Park Brake |

5

Car Connector



OR



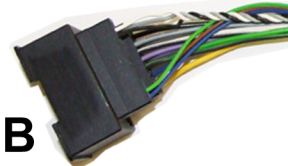
Steering Wheel Control Connector

A



OR

B



6

Complete installation of the Pioneer head unit.

