

ACCESS 130 AS

2-way component kit

- (DFS®) Dual Fiberglass Structure cone
High resistance (Power, climatic conditions, humidity...)
- Phase plug
Midrange control
- Grilles new design
Profiled

- Adjustable tweeter level
(3 positions : -3 / 0 / +3dBoct)
Soundstage positioning
- Air core inductors
Insensitive to parasite interferences



- ABS basket with 20% of fiberglass
Non magnetic, non resonant
- 25mm (1") voice coil (2 Kapton® layer)
High power handling

- 85mm magnet
High sensitivity

- Aluminum inverted dome tweeter
Accurate treble

CE QUI FAIT LA DIFFÉRENCE

- Cone DFS® (Dual fiberglass Structure)
(climatic and power) high resistance
- Tweeter level adjustment

TECHNICAL CHARACTERISTICS

Woofer: 5" (130mm)
Voice-coil diameter: 1" (25mm)
Voice-coil height: 0⁷/₁₆" (11mm)
Magnet: 3¹/₃" (85mm)
Tweeter: Aluminum inverted dome
Adjustable Tweeter level: 3 positions [-3/0/+3dB]

Crossover: 12dB/oct
Max. power: 100 Watts
Nom. power: 50 Watts RMS
Sensitivity (2.83V/1m): 90dB
Frequency response: 65Hz – 20kHz
Accessories: Supplied grilles



ACCESS 130 AS

Woofer (5")

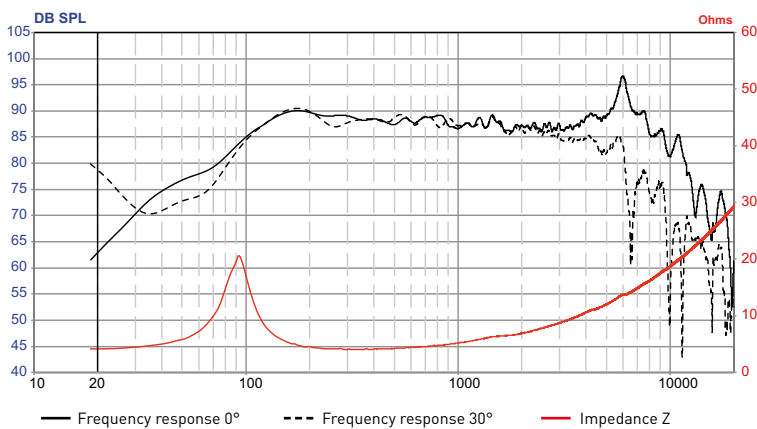


- Cone DFS®
- ABS basket

SPECIFICATIONS

Nominal power	50W	
Maximum power	100W	
Sensitivity (2,83V/1m)	90dB	
Cone	Glass fiber	
Surround	Butyl	
Nom. impedance	4 Ohms	
DC resistance	3.6 Ohms	
VC diameter	25mm	1"
VC height	10mm	0 ^{3/8} "
Former	Kapton	
Layers	2	
Wire	Copper	
Inductance	-	
Xmax	± 2.5mm	0 ^{1/8} "
Magnet d x h	85mm x 15mm	3 ^{1/3} x 0 ^{9/16} "
Magnet weight	380g	0.76 lbs
Flux density	1T	
Gap height	5mm	0 ^{3/16} "
Net weight	0.85kg	1.70 lbs

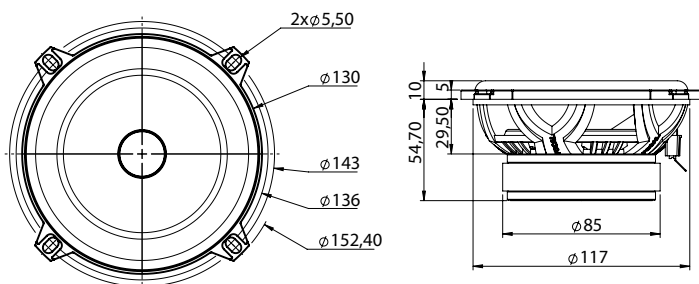
FREQUENCY RESPONSE/IMPEDANCE



PARAMETERS

Fs	92.91Hz
Vas	3.26 liters
Qts	0.711
Qes	0.84
Qms	4.64
Re	3.67 Ohms
Sd	86.59cm ²
Cas	2,03E-08 m5/N
Mas	126.3kg/m ⁴
Ras	15890,49 Ohms.ac
Cms	310µm/N
Mms	9.47g
Rms	1.191kg/s
Ces	392.08mF
Les	7.48mH
Res	20.27 Ohms
BI	4.91N/A
SPL	86.78 dB/W/m

MECHANICAL DRAWING



Performance
CREATE YOUR SOUND

FOCAL
THE SPIRIT OF SOUND