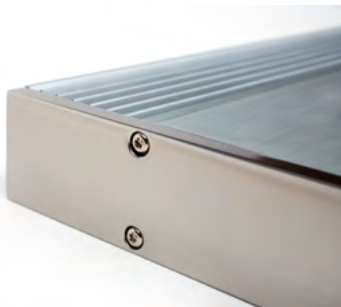


Tempo PRESTO



for music lovers

LINEA TEMPO PRESTO



PREFACE	03
INSTALLATION PROCEDURE	05
CONNECTION POWER SUPPLY	06
CONNECTION LOUDSPEAKERS	07
INPUTS	11
LIGHTS AND PROTECTIONS	12

First of all, we would like to congratulate with you for your choice of our Sinfoni Tempo amplifier. If you are reading this short introduction instead of madly flick across the pages of this handbook looking for features like the weighted noise or the T.I.M., then maybe we have hit the target to unveil a little bit of the philosophy of our laboratories. In fact, you will not find these figures among the characteristics of our products mainly because it is our firm conviction that it is impossible to value such a product only on the basis of plain numbers. It would be like guessing the taste of a dish reading just the list of its ingredients. Only after a suitable "tasting" you will realize the striking sound properties of our products, and you will appreciate their transparency, their musicality, their depth and all other aspects that probably, as a Sinfoni purchaser, you already know. Try to describe it with cold technical parameters, if you can!

In order to get the utmost from our products, we recommend you to use only high-quality components and cables: with a few adjustment every Sinfoni amplifier will give you unexpected emotions and sensations. We kindly ask you to follow the indications mentioned in this handbook, and we wish you to enjoy Music at best.



The Sinfoni car amplifiers are designed to work with a 12V DC power supply, however the voltage can range from between 11V and 14.5V. Power Supply cables must be of a suitable gauge, keeping in mind that the negative one must be connected to the ground in the nearest point of the car chassis, while the positive one must come directly from the battery. If the distance from the battery to the apparatus is quite long, then it will be necessary to use thicker cables, in order to avoid any performance loss: we suggest your installer to use at least good quality AWG10 Oxygen Free Copper cables. The REM input (remote) must be connected to the remote output of the source, which must provide at least a 60mA current, for every installed Sinfoni unit.



- GROUND - CAR CHASSIS
- SOURCE REMOTE
- BATTERY POSITIVE

The standard load impedance fitting to the amplitude series is 4Ω , but these amplifiers are fearless of a lower impedance like the one that can be easily found in a car (three way systems or highly reactive loudspeakers). Connecting a 2Ω load is not a problem, in fact, as it is possible to use a simultaneous stereo-mono configuration, then it is still possible to connect a 4Ω Subwoofer to a 4Ω system to the bridged output. This would decrease the overall load to about $1,3\Omega$ per channel. In such a case, a suitable ventilation must be provided, as well as an adequate power supply cable, due to the strong impulsive current, ranging between 20A and 35A. The following images clearly show the possible connections.

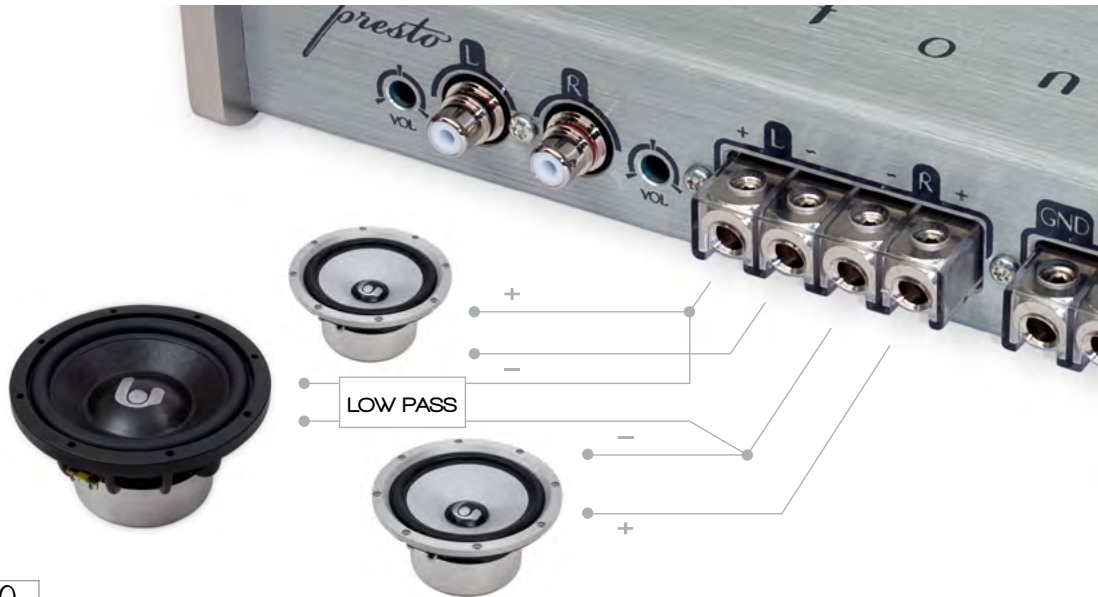
CONNECTING LOUDSPEAKERS **STEREO** CONNECTION



presto CONNECTING LOUDSPEAKERS **MONO CONNECTION**



CONNECTING LOUDSPEAKERS STEREO + MONO CONNECTION



The input load is $48\text{K}\Omega$, and its sensitivity is adjustable from 400 mV peak - peak (150mV RMS) to 8V peak - peak (2.8V RMS), therefore it perfectly matches any source, including those that provide a 4V pre out (1.4V RMS). The regulation is achieved rotating the input R and L potentiometers with a common screwdriver. In order to obtain the BRIDGED MONO operation it is necessary to use a Y cable to reach the two inputs, while in the simultaneous MONO-STEREO connection the use a passive low-pass filter before the subwoofer is necessary. This will shield it from the high and medium frequencies, that are present in stereophonic mode.

The LED nearby the power connector shows the presence of Remote signal. The thermal protection prevents the amplifier from exceeding 75°C, in case of over-heating normal operations may continue only after a temperature decrease of 10°C.

Internally, just behind the LED, you can find a fuse (20A) that can be easily reached disassembling just the amplifier's end-cap. In any case, its break is to be considered as an unlikely event, due only to a serious failure, possibly caused by an improper use of the amplifier, or a power surge during connection to the power source.

POWER SUPPLY	9-15 VCC
STANDBY CURRENT	< 1,2 A
INPUT SENSIVITY	0,4 - 8 V
INPUT IMPEDANCE	48 K Ω
OUTPUT POWER: 4 Ω @ 12/14,4 V	50/72 W X2
2 Ω @ 14,4 V	125 W X2
MONO 4 Ω @ 14,4 V	250 W X1
FREQUENCY RESPONSE	+/- 1dB FROM 10 HZ TO 30 KHZ
SIGNAL / NOISE RATIO	> 90 dB
DIMENSIONS (W/H/D)	226 X 40 X 187 (MM)
WEIGHT	2 KG



produced by

Audio Oggi s.n.c.

Via Roma 70A/B,

62100 Macerata

www.sinfoni.com

s i n f o n i
original made in italy

