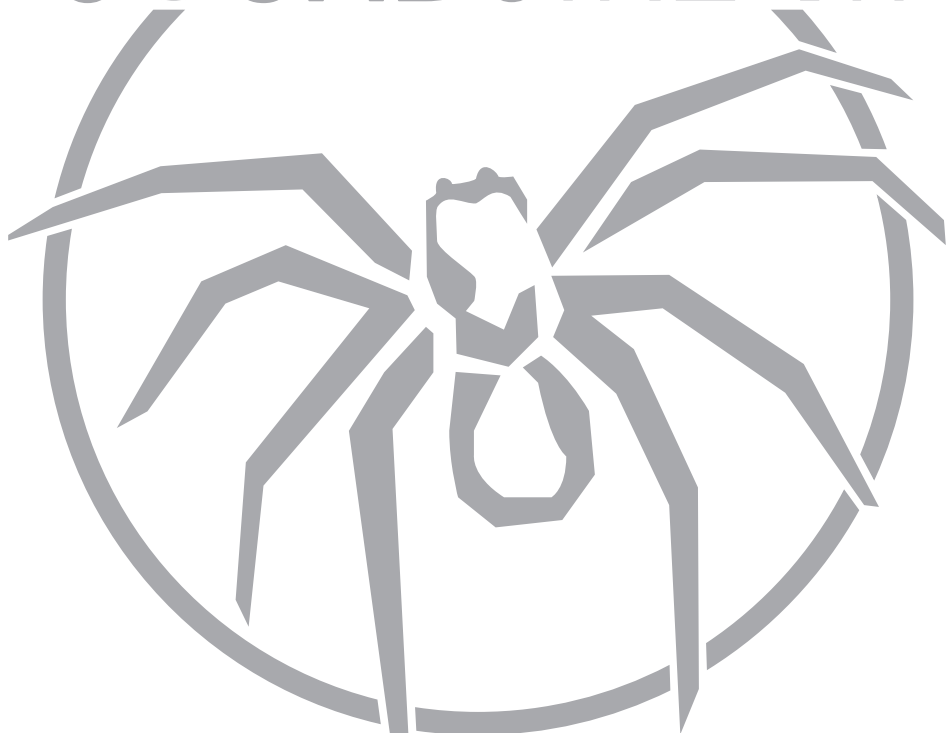


SOUNDSTREAM



2013

Stealth 6

Components

STL65.C

Contents

Introduction.....	3
Practice Safe Sound	
What's in the box	
Phantom 6 Crossover wiring diagram.....	4
Installation.....	5
Tools Needed	
Finding Speaker Mounting Locations	
Tweter Installation.....	6
Flush Mount Installation	
Surface Mount Installation	
Woofer Installation.....	7
Factory Mounting Installation	
Kick Panel Mounting Installation	
Rear Deck Lid Mounting Installation	
Limited Consumer Warranty.....	8

INTRODUCTION

Thank you for your purchase of this Stealth Series Component Loudspeaker system from SoundStream. Our engineering staff combined state of the art materials to bring you the slimmest component set on the market. We used a low resonant composite basket to bring you better lows and mids from a woofer only .75" deep. We used a Titanium tweeter to bring you very detailed highs.

PRACTICE SAFE SOUND!

Continuous exposure to sound pressure levels over 100db may cause permanent hearing loss. High power automotive sound systems can generate sound pressure levels in excess of 130db. When playing your system at high levels, please use hearing protection to prevent long term damage.

WHAT'S IN THE BOX

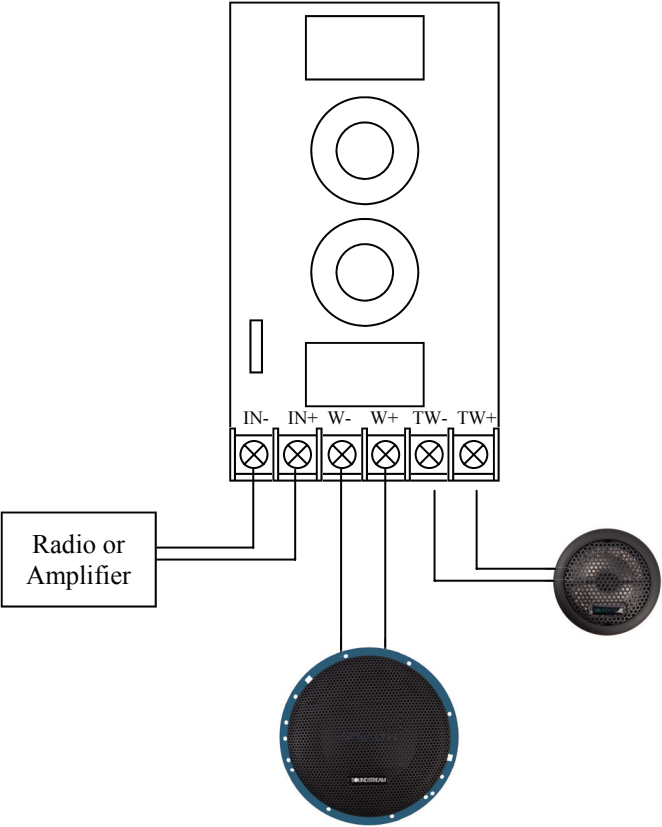
Your new Phantom series component speaker kit includes all the necessary mounting hardware and cables for a basic installation.

QUANTITY

DISCRIPTION

1	Installation Manual
2	Titanium Dome Tweeters
2	Tweeter flush mount hardware kits
2	Tweeter surface mount hardware kits
2	Slim mount Woofers w/ attached grill
2	Passive Crossovers

STEALTH 6 PASSIVE CROSSOVER (COVERS REMOVED)
WIRING DIAGRAM



Nominal Impedance	4ohm
RMS Power/Max Power	80w/140w
Frequency Response	50-20khz
Sensitivity 1w/1m	86db
Tweeter Mounting Depth	.75"
Woofer Mounting Depth	5.5"
Woofer Cut-out Dia.	.525"

INSTALLATION

The performance of your new **SOUNDSTREAM** components are directly proportional to the quality of installation. Care taken during the installation process will pay off with years of satisfying performance. If you are unsure of how to install your **SOUNDSTREAM** component speakers see a authorized **SOUNDSTREAM** Dealer.

TOOLS NEEDED

Electric Drill

Wire Cutters

Wire Crimpers

Phillips Screwdriver

Razor Blade (optional)

Hole Saws:

1^{3/4"} Hole saw (Tweeter)

5^{3/4"} Hole saw (6.5" Woofer)

FINDING SPEAKER MOUNTING LOCATIONS

Choosing the proper speaker location can have a significant effect on sound quality. There are many considerations for choosing the location that best suits your needs. The locations must be large enough for the speakers to fit without interfering with other mechanical parts such as window motors and window glass. In most situations the factory location is suitable for installation. If the factory location isn't suitable for installation or if you choose to install in a location that didn't have a previous speaker, you may want to cut a hole to mount your Stealth Components. If cutting your own hole make sure to check for wires, and any other mechanical parts in the way before you cut the mounting hole for the woofer. When installing the tweeter you should use the factory location when available. If you need to cut a hole to flush mount the tweeter assure that you have the right amount of depth before you cut. You may also surface mount the tweeters with included hardware.

Remember ***"Measure Twice and Cut Once"***

TWEETER INSTALLATION

FLUSH MOUNTING THE TWEETER

STEP 1. Determine the location for the tweeter and route the wire from the crossover to the Tweeter Location.

STEP 2. If using the factory location, remove the factory tweeter and replace with the Phantom tweeter. Use either the factory tweeter brackets or affix with apoxy to assure proper fit.

STEP 3. If using a hole saw, first drill a pilot hole, then cut out the hole using a standard 1^{3/4"} hole saw.

STEP 4. Install the Tweeter housing with the included hardware. Make sure to tighten the installation screws to assure no movement from the tweeter.

STEP 5. Connect the speaker wires observing the correct polarity.

SURFACE MOUNTING THE TWEETER

STEP 1. Determine the location for the tweeter and route the wire from the crossover to the Tweeter Location.

STEP 2. Place the surface mount housing against the panel and mark the two holes at the rear of the housing.

STEP 3. Drill the smaller center hole using a 1/8" drill bit. This is the wire routing hole.

STEP 4. Route the speaker wire through the hole and insert the Tweeter into the surface mount hole, pay attention to the location of the wire and look for any obstructions before finishing.

TIP: FOR A HIGHER SOUND-STAGE MOUNT THE TWEETERS IN THE A-PILLARS, OR USE AMBIANT TWEETERS (*SECOND SET OF TWEETERS TYPICALLY IN THE A-PILLARS*) THIS WILL GIVE YOU MORE UP-FRONT IMAGING.

WOOFER INSTALLATION

DOOR MOUNTING

When considering possible speaker locations in the door, be sure to check for operation of the window and all moving parts inside the door. Temporarily mount the speaker in the door location and carefully check window operation by rolling the window up and down to check for any inference.

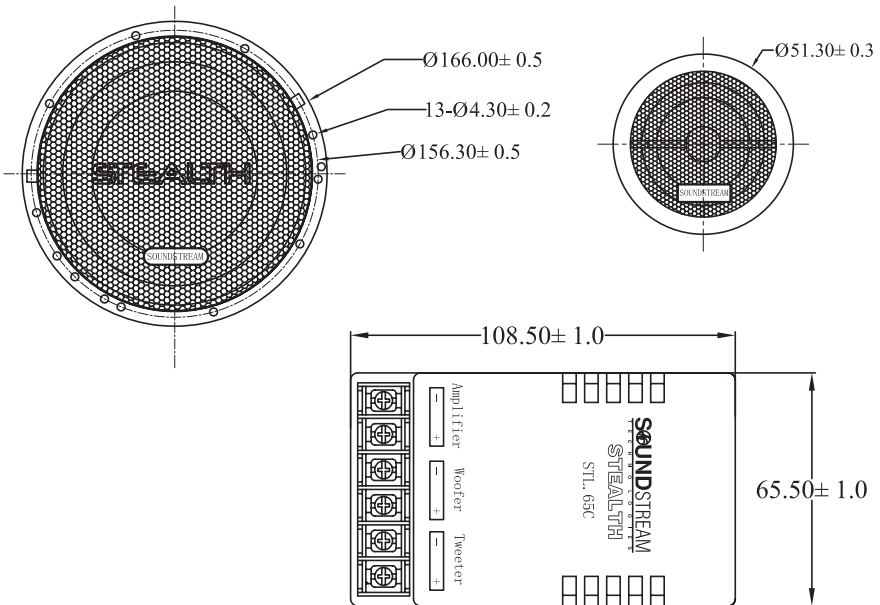
KICK PANEL MOUNTING

When installing in a kick panel check for clearance of such objects like the emergency brake pedal, or any air vents. If making custom kick panels you may want to angle the woofer towards the driver for better imaging. If installing in kick panels make sure to use the included grill to protect the woofer driver from damage.

REAR DECK MOUNTING

When installing in a rear deck make sure to check for clearance or any obstructions. Some trunk lids use a rear tension bar, make sure to stay clear of this as it will impede on the operation of the trunk and could come in contact with the speaker.

YOUR NEW STEALTH COMPONENTS HAVE A SLIM .75" MOUNTING DEPTH. THE MOUNTING LOCATIONS AND OPTIONS FOR THE MID-BASS ARE ENDLESS. NONE THE LESS PLEASE STILL CHECK FOR ANY WIRING THAT COULD BE HIDING WHERE YOU MIGHT NOT EXPECT! THIS CAN AND WILL CAUSE DAMAGE TO THE VEHICLE.



LIMITED 90-DAY CONSUMER WARRANTY

LIMITED TWO-YEAR CONSUMER WARRANTY WITH PURCHASE AND INSTALLATION BY A SOUNDSTREAM AUTHORIZED DEALER

SOUNDSTREAM promises to the original purchaser, to repair or replace this product with a new or refurbished unit (at SOUNDSTREAM's sole and absolute discretion) should it prove to be defective in workmanship or material under normal use, for a period of *two-years from the date of purchase from the SOUNDSTREAM authorized dealer, PROVIDED the product was purchased and installed by a Soundstream authorized dealer. During this *two-year period, there will be no charge for product repair or replacement, PROVIDED the unit is returned to SOUNDSTREAM, return shipping pre-paid, along with the required proof of installation, the bill of sale or other dated proof of purchase, and the consumer's contact information.

If the unit is installed by anyone other than a SOUNDSTREAM authorized dealer, the warranty period will be 90-days from the date of purchase. This warranty is non-transferable and does not apply to any unit that has been modified or used in a manner contrary to its intended purpose, and does not cover damage to the unit caused by installation or removal of the unit. During this 90-day period, there will be no charge for the repair or replacement PROVIDED the unit is returned to SOUNDSTREAM, return shipping prepaid, along with the bill of sale or other dated proof of purchase and the consumer's contact information.

This warranty is void if the product has been damaged by accident or unreasonable use, neglect, improper service or other causes not arising out of defects in materials or construction. This warranty does not cover the elimination of externally generated static or noise, or the correction of antenna problems or weak reception, damage to speakers, accessories, electrical systems, cosmetic damage or damage due to negligence, misuse, failure to follow operating instructions, accidental spills or customer applied cleaners, damage due to environmental causes such as floods, airborne fallout, chemicals, salt, hail, lightning or extreme temperatures, damage due to accidents, road hazards, fire, theft, loss or vandalism, damage due to improper connection to equipment of another manufacturer, modification of existing equipment, or Product which has been opened or tampered for any reason. Units which are found to be damaged by abuse resulting in thermally damaged voice coils are not covered by this warranty but may be replaced at the absolute and sole discretion of SOUNDSTREAM. Unit must be returned to SOUNDSTREAM, postage pre-paid, with bill of sale or other dated proof of purchase bearing the following information: consumer's name, telephone number, and address, authorized dealer's name and address, and product description. Please contact SOUNDSTREAM warranty office at 800-724-1377 or repairs@soundstream.com to obtain a Return Authorization number prior to shipping the product.

Note: This warranty does not cover labor costs for the removal and reinstallation of the unit. IN ORDER FOR THE TWO-YEAR WARRANTY TO BE VALID, YOUR UNIT MUST BE SHIPPED WITH PROOF OF INSTALLATION BY A SOUNDSTREAM AUTHORIZED DEALER. ALL UNITS RECEIVED BY SOUNDSTREAM FOR WARRANTY REPAIR WITHOUT PROOF OF SOUNDSTREAM AUTHORIZED DEALER INSTALLATION AND PURCHASE WILL BE COVERED BY THE LIMITED 1 YEAR WARRANTY.

BY PURCHASING THIS PRODUCT, ALL WARRANTIES INCLUDING BUT NOT LIMITED TO EXPRESS WARRANTY, IMPLIED WARRANTY, WARRANTY OF MERCHANTABILITY, FITNESS FOR PARTICULAR PURPOSE, AND WARRANTY OF NON-INFRINGEMENT OF INTELLECTUAL PROPERTY ARE EXPRESSLY EXCLUDED TO THE MAXIMUM EXTENT ALLOWED BY LAW, AND SOUNDSTREAM NEITHER ASSUMES NOR AUTHORIZES ANY PERSON TO ASSUME FOR IT ANY LIABILITY IN CONNECTION WITH THE SALE OF THE PRODUCT. SOUNDSTREAM HAS ABSOLUTELY NO LIABILITY FOR ANY AND ALL ACTS OF THIRD PARTIES INCLUDING ITS AUTHORIZED DEALERS OR INSTALLERS. BY PURCHASING THIS PRODUCT, THE CONSUMER AGREES AND CONSENTS THAT ALL DISPUTES BETWEEN THE CONSUMER AND SOUNDSTREAM SHALL BE RESOLVED IN ACCORDANCE WITH CALIFORNIA LAWS IN LOS ANGELES COUNTY, CALIFORNIA. Some states do not allow limitation on how long an implied warranty lasts. In such states, the limitation or exclusions of this Limited Warranty may not apply. Some states do not allow the exclusion or limitation of incidental or consequential damages. In such states, the exclusion or limitation of this Limited Warranty may not apply to you. This Limited Warranty gives you specific legal rights, and you may have other rights which vary from state to state.