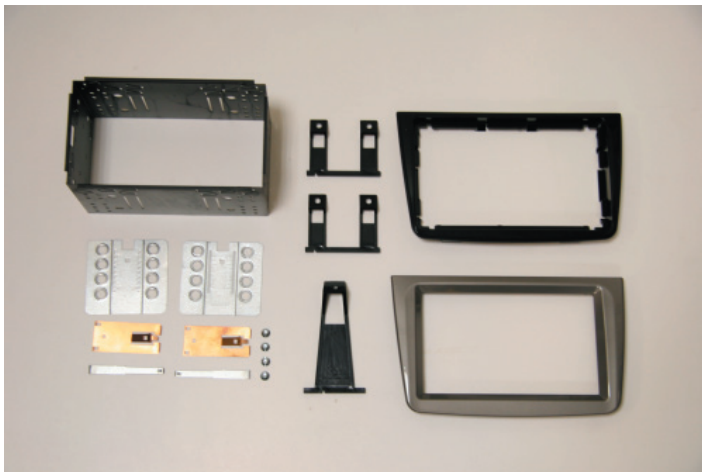
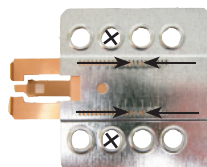
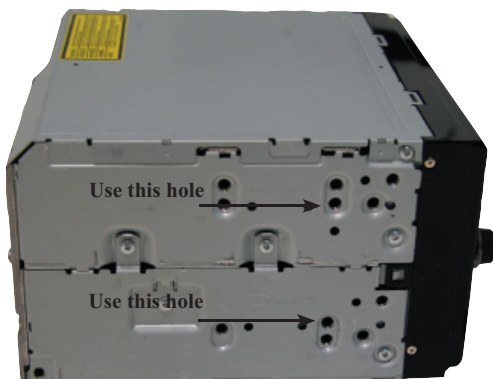


Installation manual for:  
**Alfa Mito 2008 -->**



Installation kit includes the following items:

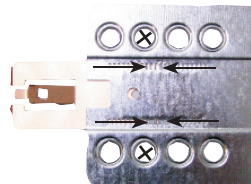
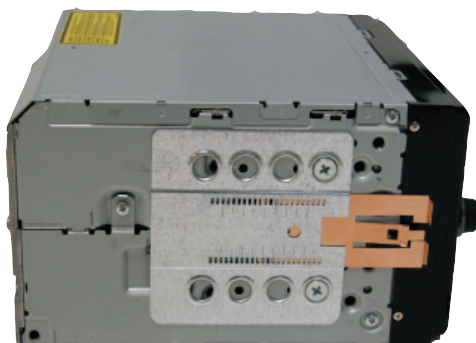
- \* 1X 2-ISO 100 mm. metal bracket
- \* 1X Fixing trim
- \* 1X Replacement Panel
- \* 2X Mounting plates
- \* 2X Mounting spacers
- \* 2X Radio removal keys
- \* 4X Screws
- \* 2X Cushion



Pioneer HD1BT

We advice to use the following positions.  
Other positions are also possible.

Use position 2 marked with a cross.  
Use position 16 & 18 marked with an arrow  
Measured from left to right.



Pioneer Avic D3

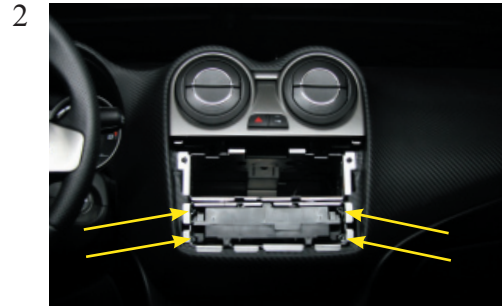
We advice to use the following positions.  
Other positions are also possible.

Use position 2 marked with a cross.  
Use position 16 & 18 marked with an arrow  
Measured from left to right.

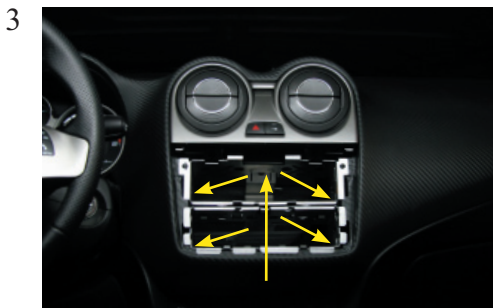
\* Mount the plates.



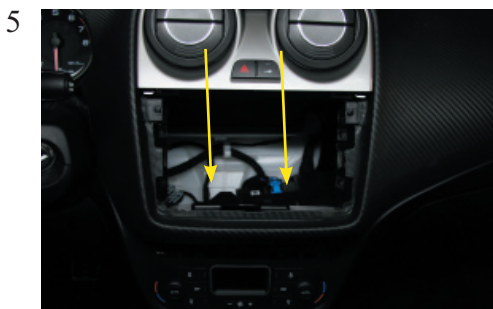
Remove the original radio using Philips radio removal keys.



Remove the black box using Philips radio removal keys.



Remove the 5 Torx T25 screws and remove the original metal bracket.



Replace the black box. Make sure you have enough room to place the 2-din headunit.



Place the fixing trim and tighten this by five Torx T25 screws.



Place the 2-din metal bracket.



Place the headunit.  
Place the replacement panel.

**Connect all of the needed wiring harnesses and check the connections carefully.**