

COMP *SPL Show*

ST 35 100 W

Technical Specifications

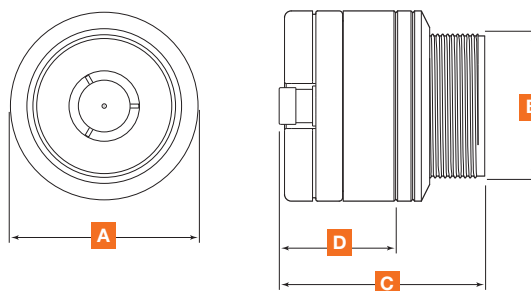
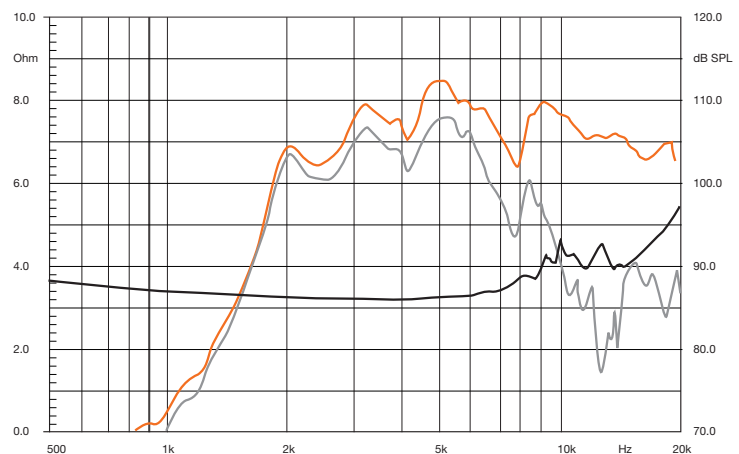
Component	High Efficiency Compression Driver	
Size	mm (inch)	35 (1" 3/8)
Power Handling	W Peak	100
	Hi-pass filtered 4,5 kHz @ 12 dB Oct.	
Impedance	Ω	4
Freq. Response	Hz	2,5k ÷ 20k
Sensitivity	dB/SPL	109
Outer \varnothing	mm (inch)	69,5 (2" 3/4)
Mounting \varnothing	mm (inch)	51,5 (2")
Total depth	mm (inch)	73 (2" 7/8)
Mount. depth	mm (inch)	41,5 (1" 5/8)
Weight	kg (lb)	0,78 (1,72)
Voice coil \varnothing	mm (inch)	35 (1" 3/8)
Magnet	Neodymium REN®	
Dome/Cone	Aluminium	



1. High thermal dissipation and magnetic permeability plates; provide constant, even flux.
2. Neodymium REN® magnet, for top SPL performance.
3. CCAR (Copper Clad Aluminium Ribbon) voice coil; for unheard-of thermal and mechanical capability.
4. Extralight aluminium membrane.
5. Anodized aluminium body; for maximum damping and vibration rejection.
6. High current, tin-plated terminals.
7. High efficiency compression loading horn.

Electro-Acoustic Parameters

D	mm	35
Xmax	mm	-
Re	Ω	2,9
Fs	Hz	3200
Le	mH @ 1 kHz	-
Le	mH @ 10 kHz	-
Vas	l	-
Mms	g	-
Cms	mm/N	-
BL	T-m	-
Qts	-	-
Qes	-	-
Qms	-	-
Spl	dB	109



A	69,5 mm (2" 3/4)
B	51,5 mm (2")
C	73 mm (2" 7/8)
D	41,5 mm (1" 5/8)