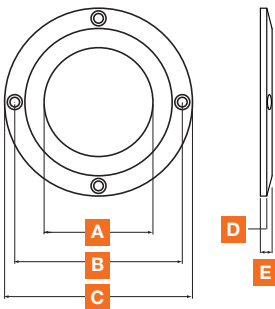


SPL/Show
ACCESSORIES
AFR 25



AFR 25



A	42,6 mm (1"11/16)
B	67,0 mm (2"5/8)
C	76,0 mm (3")
D	3,0 mm (1/8")
E	5,5 mm (3/16")

1. Supplied mounting ring for flush mount installations
2. Anodized aluminium; for maximum damping.

AFR USE

