

CORAL

HDS subwoofers

I subwoofer della linea "HDS" sono stati progettati per fornire bassi puliti, profondi e ben controllati, con una gamma dinamica impressionante e distorsione ridottissima.

I coni, in polpa di cellulosa essiccata ad aria, sono impregnati con specifici polimeri, per renderli impermeabili, rigidi e leggeri.

Le bobine mobili multistrato sono avvolte su speciali supporti che assicurano una elevata tenuta in potenza unita a notevoli escursioni, lineari e molto veloci.

Le piastre polari nere ed i poli centrali ventilati incrementano la dissipazione termica, riducendo la compressione dinamica.



The "HDS" line subwoofers are designed to supply pure and powerful basses, impressive dynamic range and very low distortion.

The cone, moulded with air dried cellulose pulp, is impregnated with polymers, in order to make it waterproof, stiff and light.

The multi-layer voice coil is wound on a special former to assure high power handling and linear and fast excursions.

The black colored pole-plate and the vented T-yoke improve the voice coil heat dissipation, reducing the dynamic compression.



HDS 808



HDS 810



HDS 812

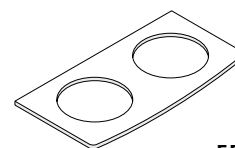


HDS 815



| Loudspeaker data | | | HDS 808 | HDS 810 | HDS 812 | HDS 815 |
|-------------------------|------|--------|----------|----------|----------|----------|
| external diameter | - | mm | 212 | 263 | 309 | 390 |
| nominal impedance | Zn | ohm | 4 | 4 | 4 | 4 |
| max power | Pm | watt | 400 | 500 | 700 | 800 |
| nominal power | Pn | watt | 200 | 250 | 350 | 400 |
| sensitivity (2,83 V/1m) | - | dB | 90 | 90 | 92 | 94 |
| frequency range | BW | hertz | 40 ÷ 400 | 30 ÷ 300 | 25 ÷ 250 | 20 ÷ 200 |
| resonance frequency | Fs | hertz | 44 | 27 | 27 | 26 |
| mechanical Q factor | Qms | - | 12,28 | 5,19 | 5,42 | 5,34 |
| electrical Q factor | Qes | - | 0,52 | 0,53 | 0,48 | 0,56 |
| total Q factor | Qts | - | 0,49 | 0,48 | 0,44 | 0,51 |
| moving mass | Mms | g | 72,4 | 114,4 | 123,9 | 136,0 |
| compliance | Cms | mm/N | 0,18 | 0,30 | 0,28 | 0,28 |
| emission diameter | D | mm | 164 | 210 | 257 | 328 |
| equivalent volume | Vas | litres | 11 | 51 | 105 | 282 |
| force factor | BxL | N/A | 11,3 | 11,1 | 12,2 | 11,3 |
| voice coil resistance | Re | ohm | 3,3 | 3,3 | 3,3 | 3,3 |
| voice coil inductance | Le | mH | 1,6 | 1,7 | 1,3 | 1,3 |
| linear excursion | Xmax | mm | ± 7,7 | ± 10,7 | ± 5,6 | ± 5,6 |
| voice coil diameter | - | mm | 50 | 50 | 60 | 60 |
| cut out diameter | - | mm | 180 | 227 | 273 | 352 |
| installation depth | - | mm | 103 | 120 | 133 | 160 |

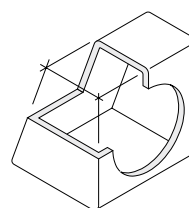
| Suggested enclosures | | HDS 808 | HDS 810 | HDS 812 | HDS 815 |
|----------------------|---------------|---------------|---------------|----------------|----------------|
| CLOSED BOX | small volume | 7 litres | 13 litres | 22 litres | 32 litres |
| | sensitivity | 87 dB @ 80 Hz | 88 dB @ 55 Hz | 90 dB @ 50 Hz | 95 dB @ 70 Hz |
| | range | 70 ÷ 120 Hz | 50 ÷ 120 Hz | 50 ÷ 120 Hz | 45 ÷ 120 Hz |
| CLOSED BOX | large volume | 10 litres | 17 litres | 32 litres | 47 litres |
| | sensitivity | 87 dB @ 70 Hz | 88 dB @ 55 Hz | 90 dB @ 50 Hz | 95 dB @ 60 Hz |
| | range | 60 ÷ 120 Hz | 45 ÷ 120 Hz | 45 ÷ 120 Hz | 40 ÷ 120 Hz |
| BASS-REFLEX | small volume | 10 litres | 28 litres | 37 litres | 93 litres |
| | sensitivity | 91 dB @ 68 Hz | 93 dB @ 55 Hz | 95 dB @ 60 Hz | 97 dB @ 55 Hz |
| | range | 52 ÷ 120 Hz | 37 ÷ 120 Hz | 42 ÷ 120 Hz | 35 ÷ 120 Hz |
| | reflex tube | Ø 74 x 200 mm | Ø 74 x 170 mm | Ø 94 x 200 mm | Ø 154 x 240 mm |
| BASS-REFLEX | large volume | 14 litres | 38 litres | 52 litres | 122 litres |
| | sensitivity | 91 dB @ 53 Hz | 92 dB @ 48 Hz | 94 dB @ 50 Hz | 97 dB @ 45 Hz |
| | range | 45 ÷ 120 Hz | 31 ÷ 120 Hz | 35 ÷ 120 Hz | 31 ÷ 120 Hz |
| | reflex tube | Ø 74 x 210 mm | Ø 74 x 170 mm | Ø 94 x 180 mm | Ø 154 x 240 mm |
| BAND-PASS | closed volume | 8 litres | 12 litres | 23 litres | 53 litres |
| | reflex volume | 6 litres | 17 litres | 21 litres | 42 litres |
| | sensitivity | 90 dB @ 58 Hz | 92 dB @ 50 Hz | 94 dB @ 50 Hz | 96 dB @ 45 Hz |
| | range | 52 ÷ 110 Hz | 42 ÷ 100 Hz | 42 ÷ 120 Hz | 35 ÷ 120 Hz |
| | reflex tube | Ø 74 x 200 mm | Ø 94 x 190 mm | Ø 119 x 180 mm | Ø 154 x 250 mm |



FREE AIR

E' un'installazione semplice, ma non fornisce le prestazioni di un box e limita la tenuta in potenza dell'altoparlante.

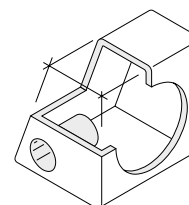
It's an easy installation, but it doesn't offer performances like a box and reduces loudspeaker power handling.



CLOSED BOX

E' il box più piccolo e facile da costruire, ma con una sensibilità inferiore a quella degli altri sistemi.

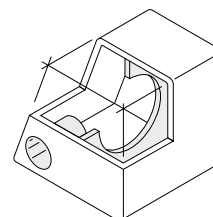
It's the smallest and simplest enclosure to build, but it supplies a little bit lower pressure than other configurations.



BASS-REFLEX

Richiede una maggior abilità per la realizzazione del box, ma offre una gamma bassa corposa ed un'ottima dinamica.

It requests more skill to build the enclosure, but it offers powerful low frequency range and very good dynamics.



BAND-PASS

E' il sistema più critico e difficile da realizzare, suggeriamo la sua costruzione solo a persone molto esperte.

It's the most critical and hard to build enclosure, we suggest its construction just to very expert people.