

## SYSTEM energy

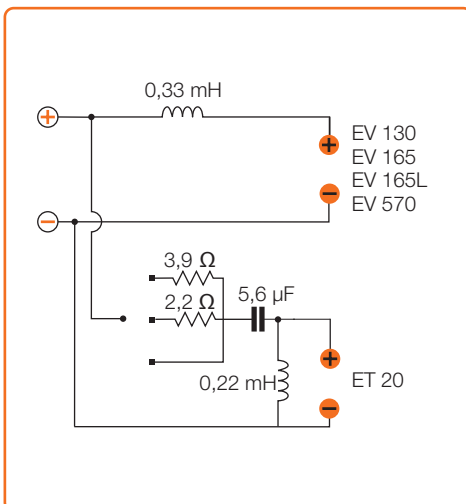
### ESK 165L 200 Watt



#### Technical Specifications

<b>Component:</b>	2 way system	
<b>Size</b>	EV 165L woofer	165 mm (6 <sup>5/8</sup> )
	ET 20 tweeter	20 mm (3/4")
<b>Power Handling (Watt)</b>	peak	200
	continuous program	100
<b>Impedance</b>	Ohm	4
<b>Frequency response</b>	Hz	50 - 23k
<b>Sensitivity</b>	dB/SPL	92
<b>Outer diameter</b>	mm	165
<b>Mounting hole diameter</b>	mm	145
<b>Magnet size</b>	mm	85
<b>Total depth</b>	mm	72
<b>Mounting depth</b>	mm	66
<b>Weight of one component</b>	Kg	0,920

#### CX 200



#### ET 20

- 1 Tetolon dome; extremely light and well damped for a smooth and extended high frequency response.
- 2 20mm Ø, ultra light ferrofluid-cooled mobile voice coil.
- 3 High energy REN neodymium magnet.
- 4 Low carbon content plates for maximum magnetic permeability and high heat dissipation.
- 5 Damping material; controlling acoustic resonances insuring clear, brilliant high frequency tones.
- 6 High frequency diffraction lens, optimizing off-axis high frequency response.

#### EV 165L

- 1 Low carbon content plates for maximum magnetic permeability and high heat dissipation.
- 2 Large motor assembly provides excellent, voice coil control.
- 3 Pure copper long throw voice coil wound on TiI former, for very good thermal and mechanical capacity.
- 4 Vent hole provides linear excursion and better thermal dissipation.
- 5 Water-repellent non-pressed paper cone provides deep, tight and dynamic bass output.
- 6 "V" cone, for the best off-axis response, clear mid-high frequency detail and powerful bass.
- 7 Rubber magnet cover provides damping to the basket and motor structure and protects from abrasions and damages.
- 8 DIN size basket coated with scratch-proof, corrosive-resistant material.
- 9 High density rubber surround, glued with heat-resistant adhesive.
- 10 Epoxy glue for basket and motor system provides perfect coupling.
- 11 Curve memory Nomex spider for consistent, reliable performance.
- 12 Tin-plated, high current terminals.
- 13 Silver-plated lead wires for maximum reliability and conductivity.

\*Grille included

