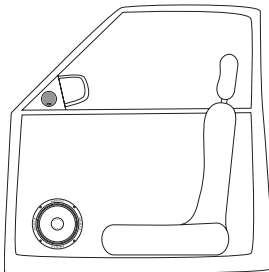


HI ENERGY

2W.20

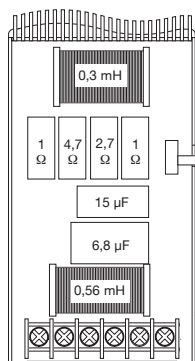
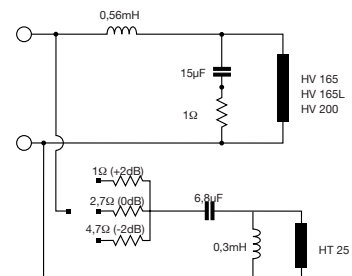
Technical Specifications

Component	Two Way Passive Crossover	
Size	70x133x31	
Power Handling (Watt)	peak	250
	continuous program	125
Crossover Frequency	Hz	3,3k
Slope	dB/Oct.	12-12
Specific Components	HT 25 +	HV 165 HV 165L HV 200
Adjustment	+2; 0; -2 dB	TW

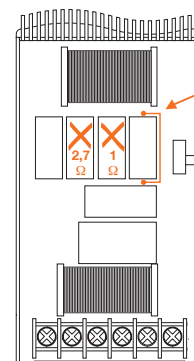


CROSSOVER

Tweeter	Woofers	Crossover
HT 25	HV 100	2W.10_M100
HT 25	HV 130	2W.10
HT 25	HV 165	2W.20
HT 25	HV 165 L	2W.20
HT 25	HV 200	2W.20
HT 20 sostituisce le resistenze originali con altre di valore indicato nello schema utilizzando le audioresistor First R5 di AZ audiocomp Replace the original resistors with other values ones, as indicated in the drawing, using First R5 audioresistor by AZ audiocomp		
HT 20	HV 100	2W.10_M20
		2W.20_M20
HT 20	HV 100	2W.10



2W.20
 Originale
 Original



Ponticellare
 Make a bridge

2W.20_M20
 Modifica per l'utilizzo
 con il tweeter HT 20
 Tuning to be used
 with HT 20 tweeter