

HI ENERGY

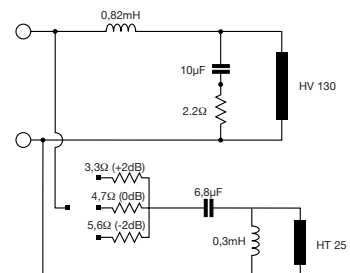
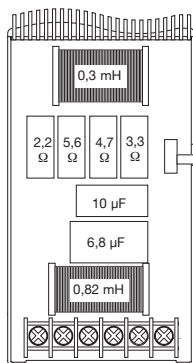
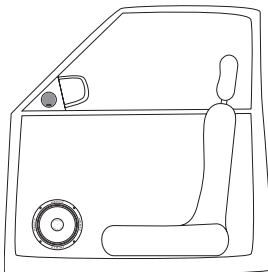
2W.10

Technical Specifications

Component	TwoWay Passive Crossover	
Size	70x133x31	
Power Handling (Watt)	peak	200
	continuous program	100
Crossover Frequency	Hz	3,5k
Slope	dB/Oct.	12-12
Specific Components	HT 25	
	HV 130	
Adjustment	+2; 0; -2 dB	TW



CROSSOVER



Tweeter	Woofer	Crossover
HT 25	HV 100	2W.10_M100
HT 25	HV 130	2W.10
HT 25	HV 165	2W.20
HT 25	HV 165 L	2W.20
HT 25	HV 200	2W.20
HT 20 sostituite le resistenze originali con altre di valore indicato nello schema utilizzando le audioreistor First R5 di AZ audiocomp		2W.10_M20 2W.20_M20
Replace the original resistors with other values ones, as indicated in the drawing, using First R5 audioreistor by AZ audiocomp		
HT 20	HV 100	2W.10

